



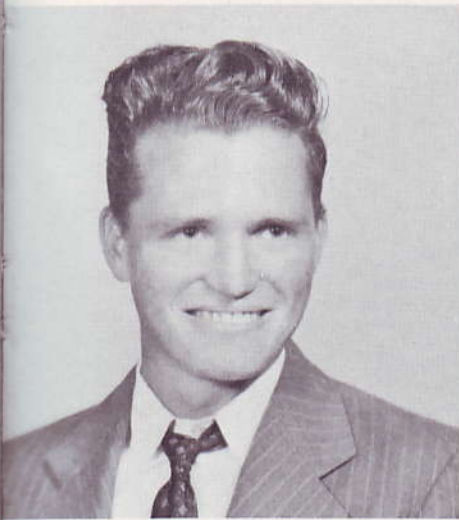
NONA FAYE BROWN



FRANCES BUSBY
Jr. Honor Society 9, 10; 4-H Club 9, 12; Waitress Jr.-Sr. Banquet 10; Sr. Council 12; Emissary Staff 12; Decoration Committee Jr.-Sr. Banquet 11; Girl's Sports Club 12; Costume Committee Sr. Play.



CARL BUTTS
Football 9, 10, 11, 12, Captain 9, 12; Annual Staff 12; Emissary Staff 12; Choir 9, 10, 11, 12; Boys' State 11; Boy's Glee Club 9; Sextet 11; Quartet 12; Sr. Council 12, Vice President; Campus Personality 11, 12; Chairman Decoration committee Jr.-Sr. Banquet 11; Waiter Jr.-Sr. Banquet 10; Flag monitor 9, 10, 11; Letterman's Club 12; FTA 11; Jr. Play 11; Polio Play 10; Operetta Cast 10; Track 9; AASC 11.



ROBERT CASSELL
Luxora: FFA 9, 10, 11; Forrest City: FFA 12.



YOUNG PING CHIN
Basketball 9, 10, 11, 12; All District 9; FHA 9, 10, 11, 12; Secretary 10; Federation President 12; Jr. Degree 9; Chapter Degree 10; State Degree 11; Who's Who 9; Campus Personality 9, 10, 12; Jr. Honor Society 9, 10; Sec.-Treas. 9; Latin Club 10, 11, 12; Sec. 10, 11; State Secretary-Jr. Classical League 12; Sr. Honor Society 11, 12; Girls' State 11; Student Director of Jr. Play 11; Sr. Council 11; FTA 9, 10; Card Committee Jr.-Sr. Banquet 11; Office Staff 12.



BONNIE SUE CLARK
Basketball 9; 4-H Club 9, 10, 11; President 4-H County Council 11; FHA 9, 10; FTA 11, 12; Secretary 11, 12.