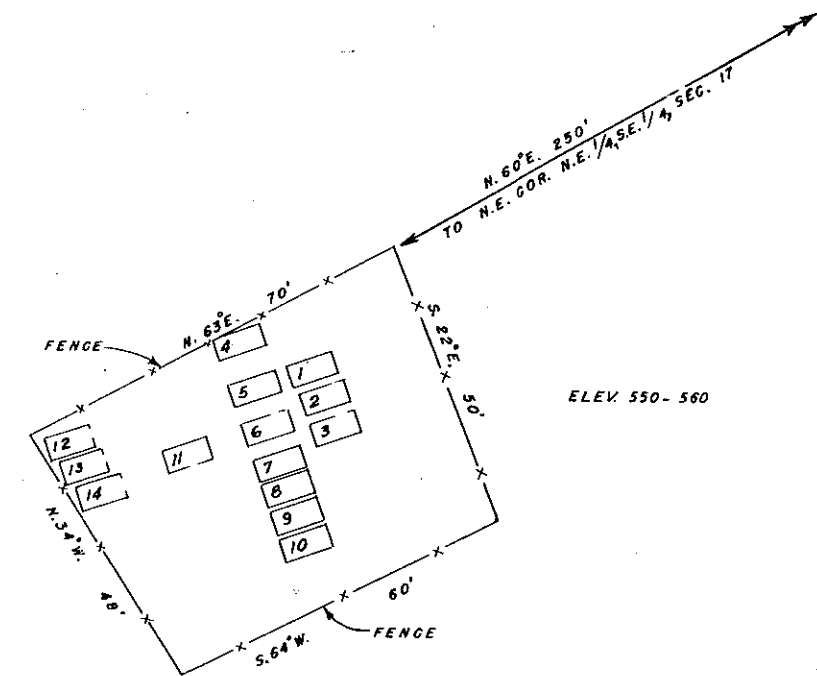
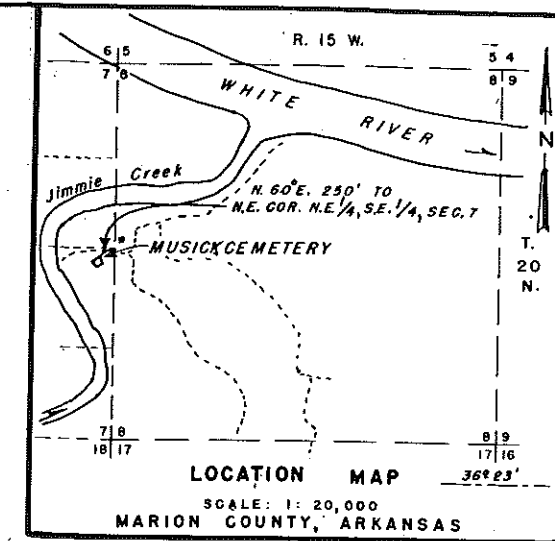
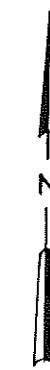


APPROX. 3/4 MILE TO IMPROVED ROAD TO FLIPPIN

Private Road to Otto Hodges Farm



NOTE:
 GRAVES NOS. 1 TO 10 INCLUSIVE IN THIS CEMETERY TO BE RELOCATED IN FLIPPIN CEMETERY B.S.C-2-R. SEE SHEET NO.10 FOR LAYOUT.
 GRAVES NOS. 11 TO 14 INCLUSIVE TO BE RELOCATED IN NEW WILDCAT CEMETERY B.S.C-1-R. SEE SHEET NO. 9 FOR LAYOUT.

SCHEDULE OF RELOCATION					
GRAVE NO.	NAME	EXISTING CEMETERY		RELOCATED CEMETERY	
		CEM NO.	GRAVE NO.	CEM NO.	GRAVE NO.
1	GENIRA MUSICK ESTES			BSC-2-R	8
2	JENNIE MUSICK			"	9
3	LOUISA MUSICK FEE			"	10
4	JANIE STONE MUSICK			"	6
5	ANDREW BENTON MUSICK			"	5
6	SAMANTHA MUSICK			"	7
7	CLAUDE MUSICK			"	1
8	LEOMA MUSICK			"	2
9	JOE MUSICK			"	3
10	VIRGIL MUSICK			"	4
11	INFANT SANDERS			BSC-1-R	220
12	INFANT SANDERS			"	219
13	INFANT SANDERS			"	218
14	ADULT SANDERS			"	217

RECORD DRAWING AS CONSTRUCTED
John W. Smith 1-18-50

WHITE RIVER WATERSHED WHITE RIVER, ARKANSAS
 BULL SHOALS RESERVOIR
 CEMETERY RELOCATION
 MUSICK CEMETERY NO. B.S-5
 IN 12 SHEETS SCALE: 1:240 SHEET NO. 8
 20 0 20 40 60
 SCALE OF FEET
 LITTLE ROCK DIST., LITTLE ROCK, ARK., MAR. 1948
 SUBMITTED: APPROVAL RECOMMENDED: APPROVED:
John W. Smith *W. Schneider* *J. Tabore*
 HEAD, RELOC. SEC. CHIEF, ENRR. DIV. COL., CORPS ENGS.
 DRAWN A.M.H. DISTRICT ENGINEER
 TRACED SERIAL 5965
 CHECKED O.L.G. FILE 139/1838